



CHIMERA PAYLOAD

Envisioning Aerial Supremacy





About **Thirdeye Systems.**

ThirdEye Systems is a leading provider of AI analytics for vision and robotic systems. We enhance robots with real-world understanding and enable them to perform meaningful missions with AI at the edge and immediate reaction time.

Established in 2010, a public company listed in Israel, a leading provider for the Israeli MoD and the HLS & Defense industries, in Israel and abroad.



Aeronautics



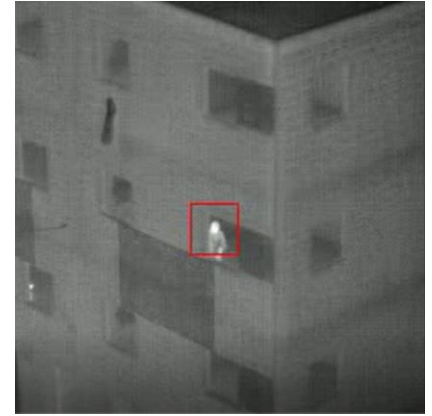
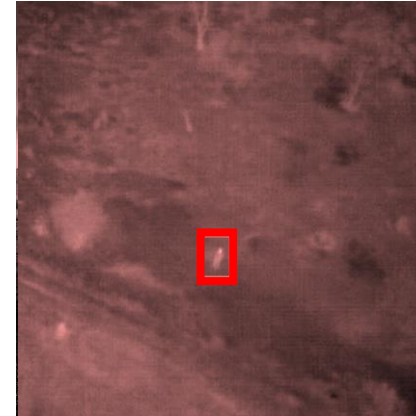


On The Cutting Edge Of Object **Recognition Technology**

ThirdEye developed advanced algorithms empowering tactical electro-optic instruments with magnified recognition abilities – while simultaneously analyzing augmented data from various sources.

Our innovative turnkey solutions are in use worldwide for wide-ranging applications, including area dominance, immune navigation, launch detection, active tracking, and multipole object recognition and classification.

The Chimera Edge | **AI Edge Computing Payload**



RT Object Recognition

Day/Night camera attached to drones, vehicles and robots

Unrivalled Recognition Reliability

15 to 17 cm per pixel

Unmatched Detection Distance

Enhance any DRI in 30%

Proprietary AI Algorithms

Leveraging thermal imaging & HD cameras

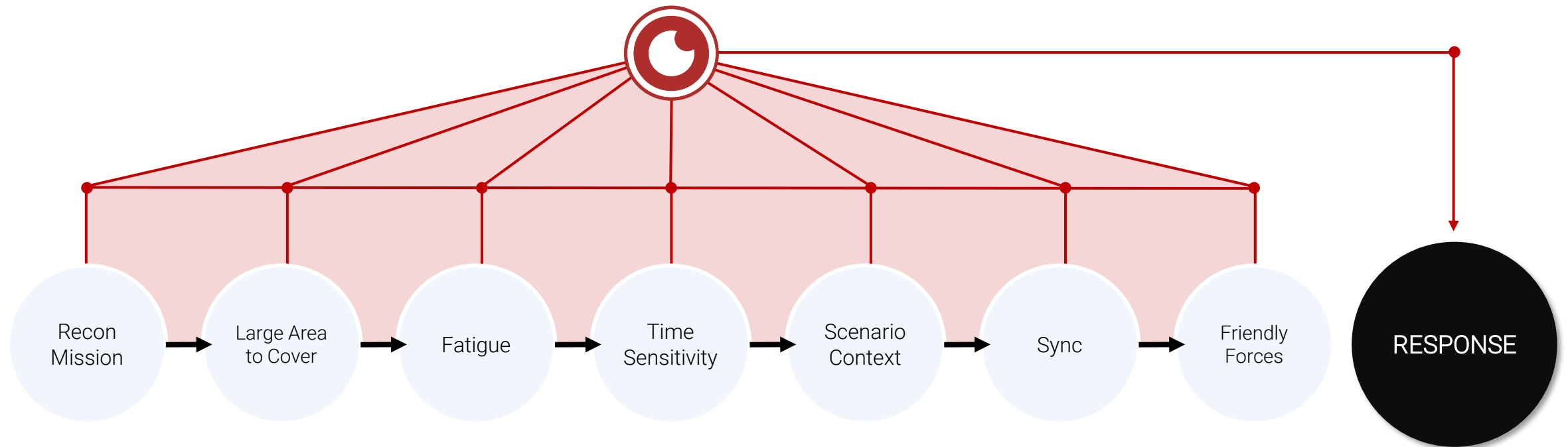
Longest Flight Time

Consumes 30% less power

Lightest Payload

Only 450 gr. for less power consumption

Operating Drones | **Challenges & Considerations**



Core Technology

Raw data analysis

Edge computing

Sensor fusion

Analytics based on VMD & ATR

Proprietary data base

Field proven

Minimal pixels for detection

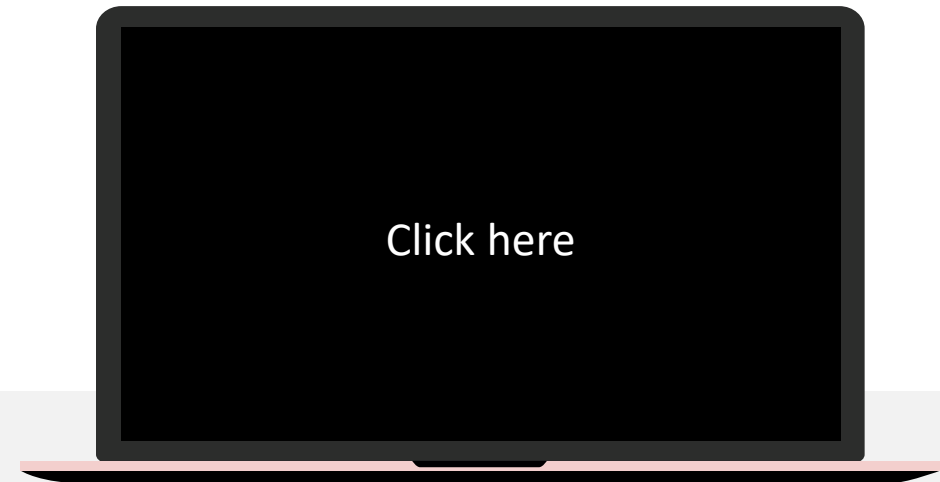


Unprecedented Area Dominance | **WAPS**

Gazing & Investigating without Losing Sight



0.25² km coverage with single Chimera



CHIMERA *compatible* 



Maximal Situational Awareness

DJI Matrice series drones compatible

Plug & Play / Controlled by the dedicated Chimera app

- Mission-oriented Android application
- Tier-1 of DJI
- Plug & Play
- Offline and online maps
- Scanning zones
- Coordinates extraction and activity logbook
- FOV footprint on map
- Offline disconnected server (optional)

cEYE | Command and Control

State of the art detection and classification AI algorithm

- Compatible for Pixhawk based drones
- Swarm coordinated operation
- Speech control (optional)
- Fully integrated to maximize CHIMERA's capabilities
- Advanced multi-sector scanning
- Flexible client/server architecture
- Routes planning
- Gimbal behavior
- Situation engine



Advantages that make a difference



Synchronized System

All components synced to work simultaneously, separately and as a whole



Situational Awareness

Maximize operator's ability to focus on the event



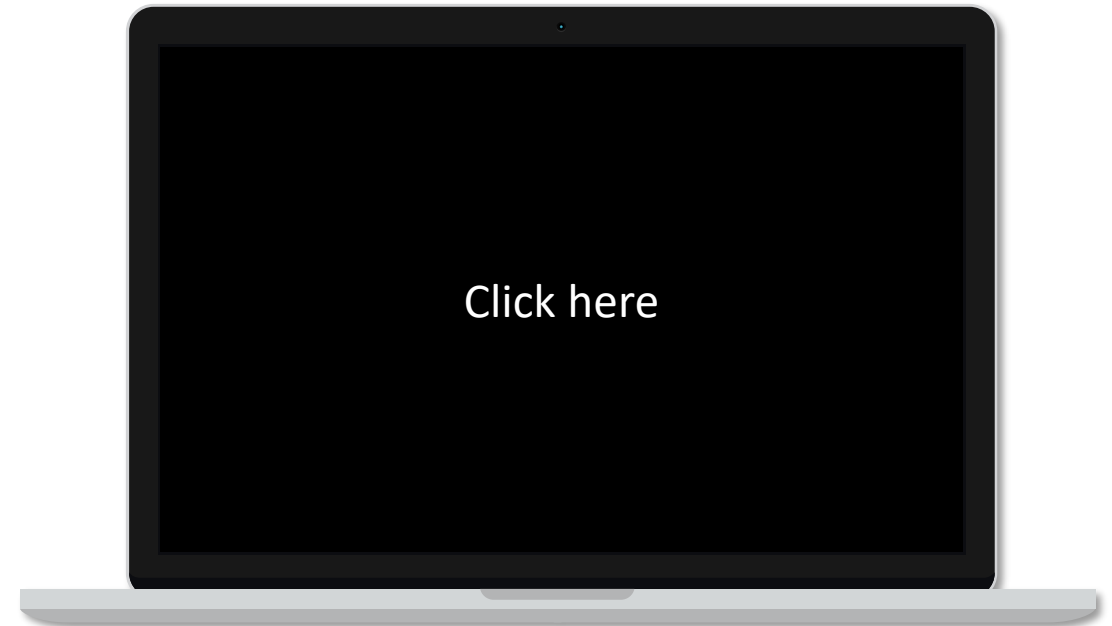
Data Fluid

All data can be transmitted in real time to multiple users

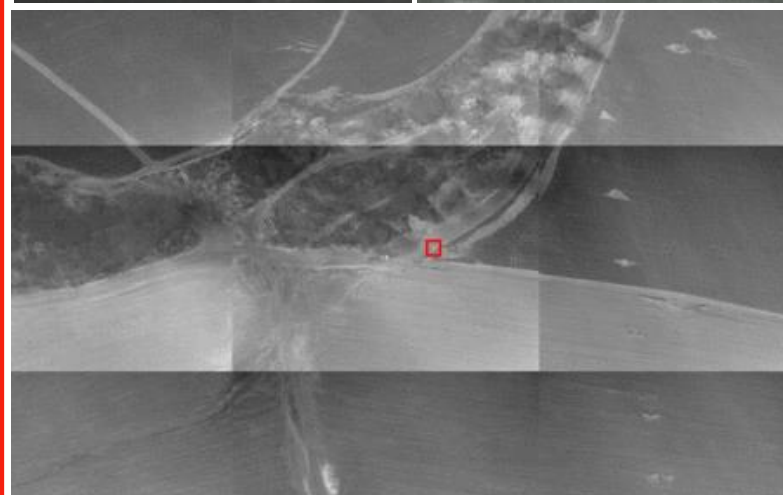
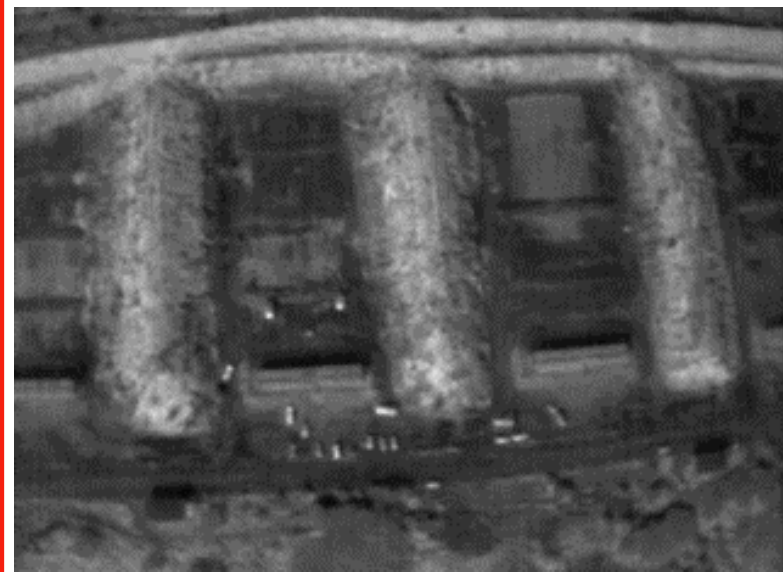


Scalability

Flexible design supporting unlimited growth and future applications



Solutions | **Situational Awareness Enhancement**



WAPS



Active Tracker



Immune Navigation



Fire Detection & Management



Launch Detection



Applicable for Various Drones

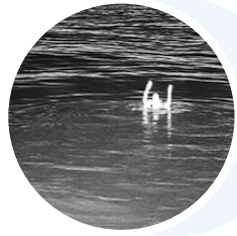
Discover the
CHIMERA



Designed For Multiple | **Scenarios & Applications**



Drone Detection



Search & Rescue



Human & Vehicle
Detection



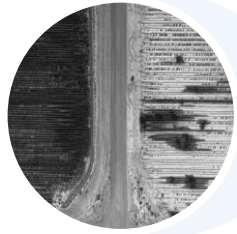
Illegal Activity



Fire Detection



Oil & Gas Protection



Auto Mission



Tactical Operations



Intelligence

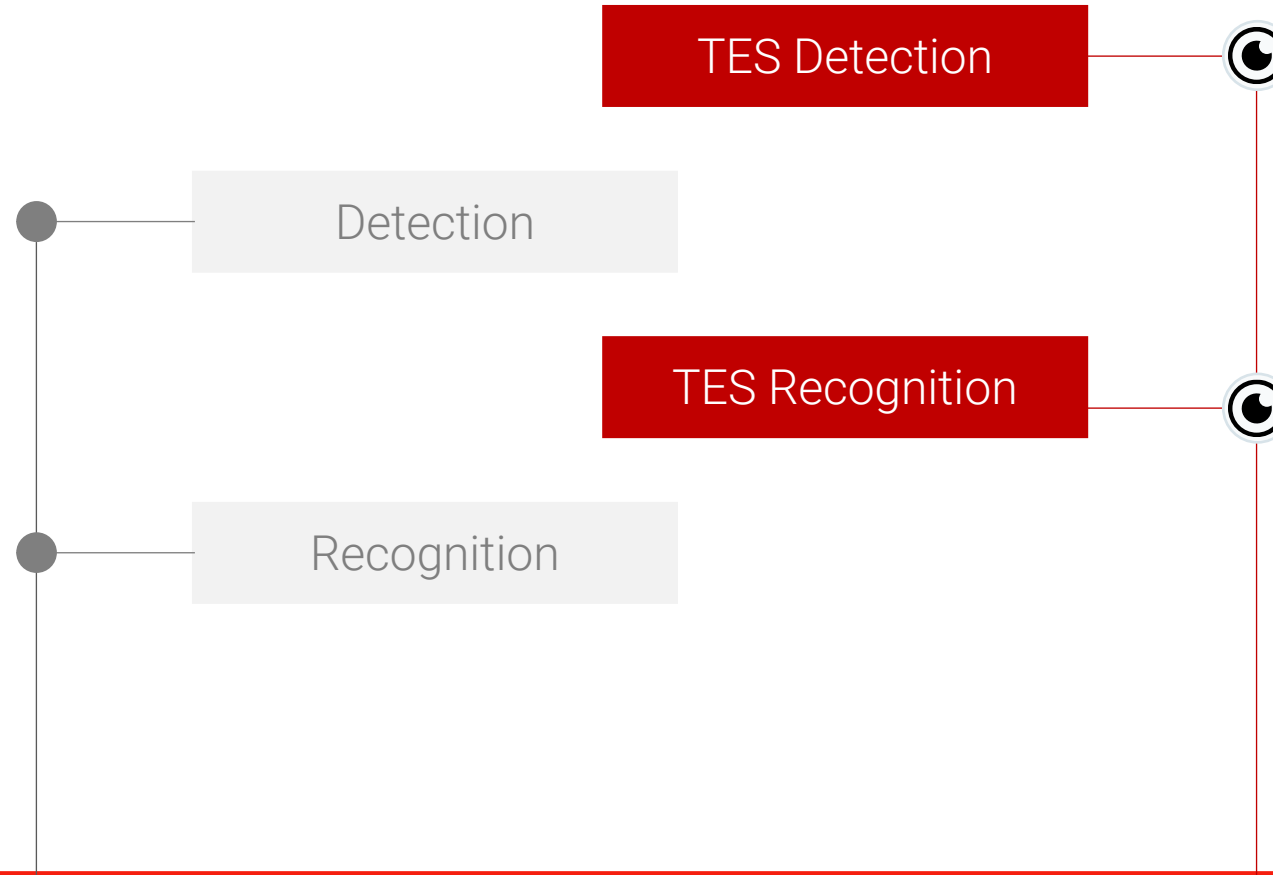


Geo Location Tracking

Appendix

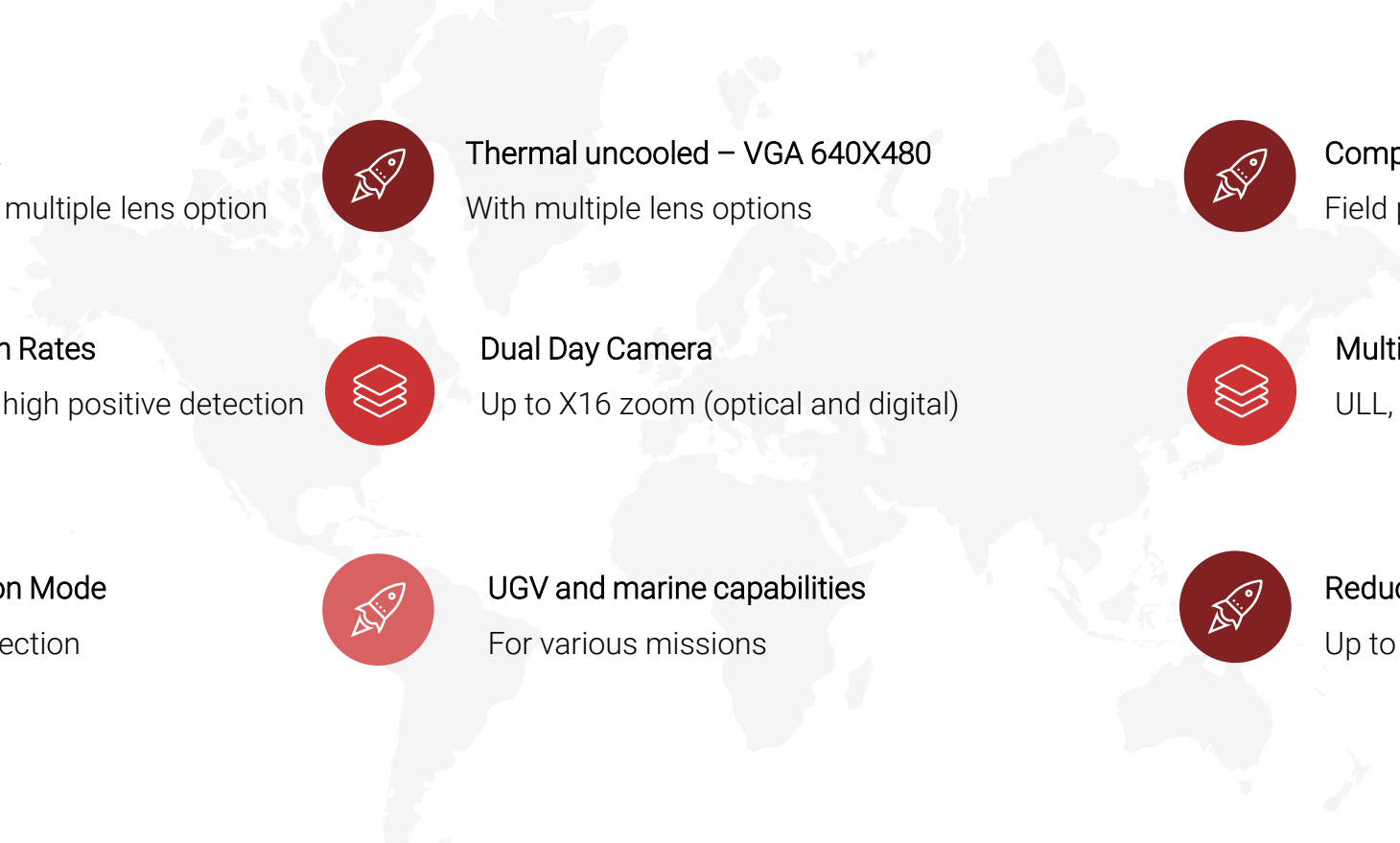









Our Technology Enhances Detection And Recognition

By Johnson's Criteria

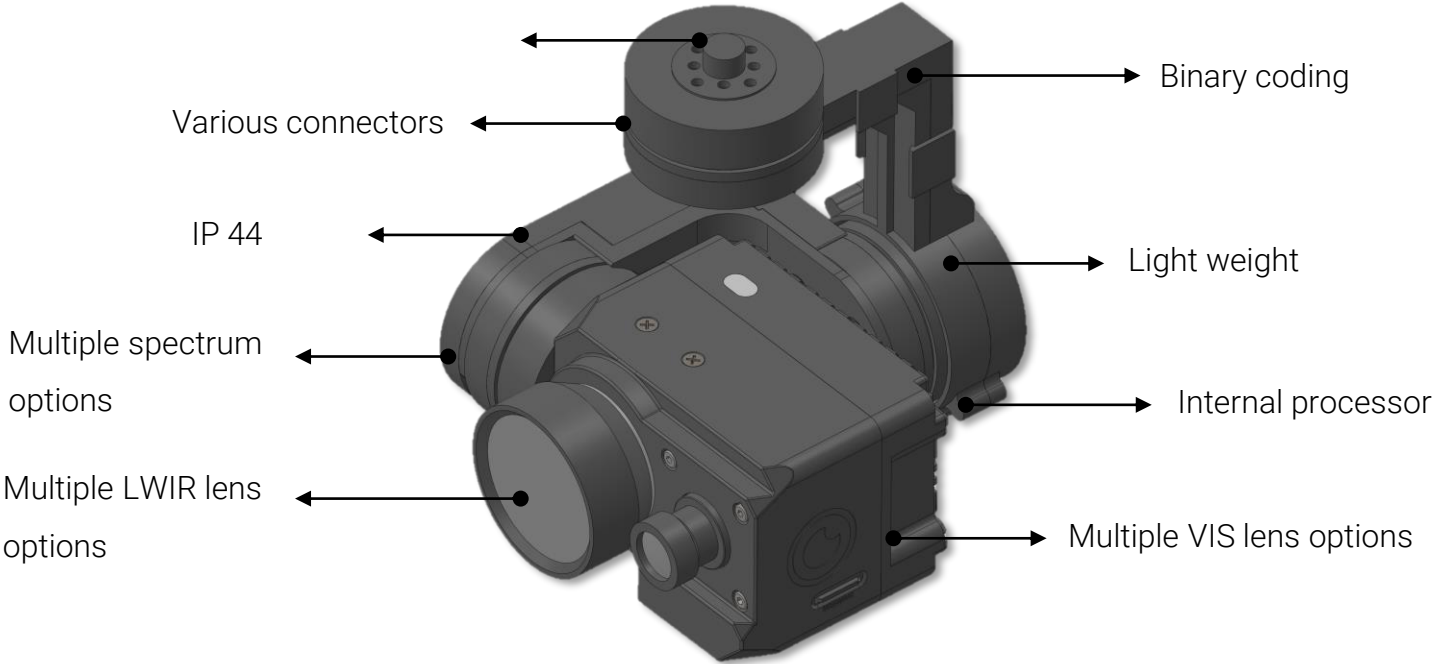


Specifications

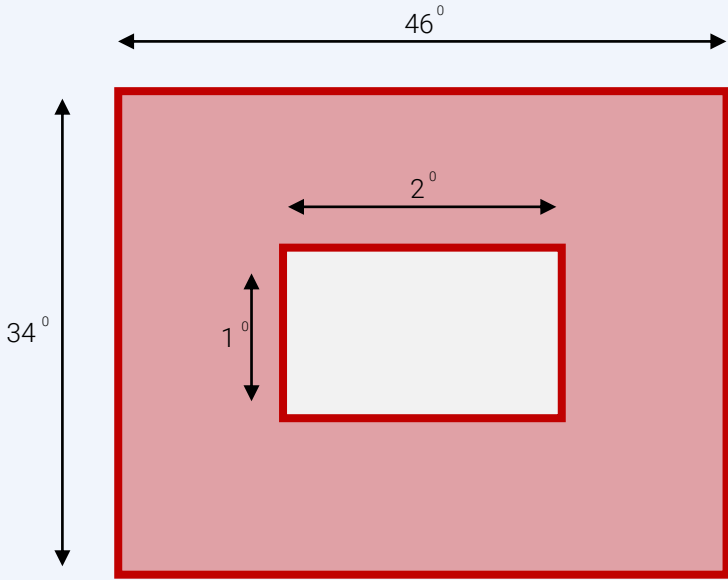
Operated by the IDF SOF, Air Force, Ministry of the Prime Minister, and other countries and governmental entities worldwide

- 
- A light gray world map is centered in the background of the specifications section.
-  **Electro-optic 4K**
VIS Sensor with multiple lens option
 -  **Thermal uncooled – VGA 640X480**
With multiple lens options
 -  **Compatible**
Field proven with several platforms
 -  **94% Recognition Rates**
Field proven for high positive detection
 -  **Dual Day Camera**
Up to X16 zoom (optical and digital)
 -  **Multi Spectral**
ULL, VIS, NIR, SWIR, MWIR, LWIR
 -  **Defaulted Fusion Mode**
For optimal detection
 -  **UGV and marine capabilities**
For various missions
 -  **Reduced Weight & Consumption**
Up to 600 gr and less than 12V

Specifications



Zoom	Vertical FOV:	Horizontal FOV:
1	34	46
2	17	24
3	12	16
4	9	12
5	7	10
6	3	5
7	2	3
8	1	2



Zoom | Magnify 36 times in 8 steps
X18 optical and X2 digital



THANK YOU

thirdeye-systems.com